

Using the Update Utility to Update your System's Software

Update Utility Version 02.02.02 – System Software Version 03.**.**

*System software version 03.**.** requires expanded memory CPU P/N 80025B in DS2000 or expanded memory cabinet P/N 80200A in DS1000. The Update Utility requires DS2000 version 02.11.00 or higher or any version DS1000.*

Minimum Requirements

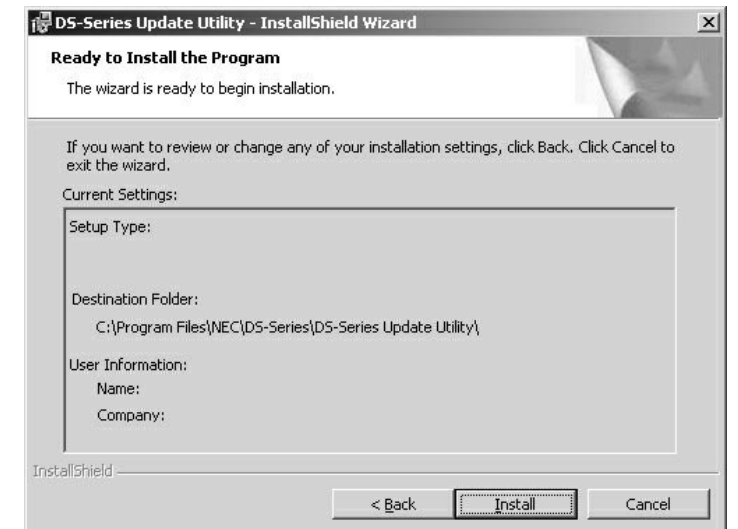
- P100 with 16 MB RAM, 256 Color 800 x 600 display, COM port must support 115Kbps.
- Windows 95 and above (with 32-bit file names enabled).
- DS2000 02.11.00 or higher with CPU P/N 80025B only. DS1000 any version with cabinet P/N 80200A.

Installation

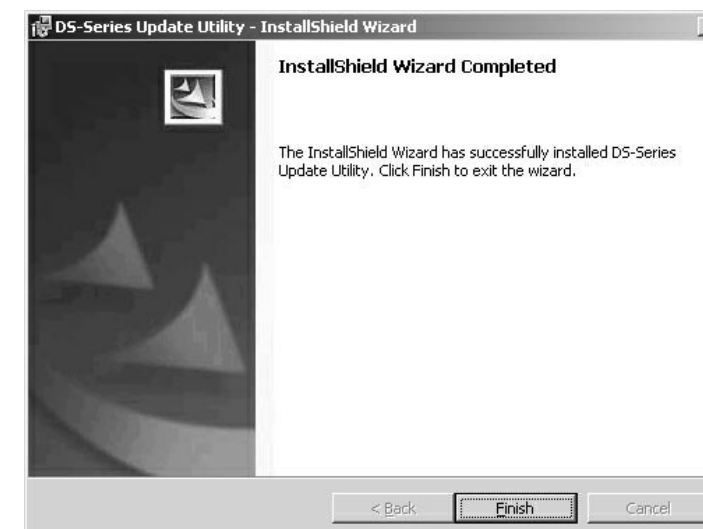
1. Insert your System Document CD.
2. If the CD interface program automatically starts:
 - Click the **Software** tab and follow the instructions on screen.
 If the CD interface program *does not* automatically start:
 - Click **Start + Run + Browse**, then click the CD icon.
 - Browse to `\Update_UTILITY\80250AV**.**.**. \` and double-click `ds_series_update_util_setup.exe`. You see:



3. When you see the screen at left, click **Next>**.

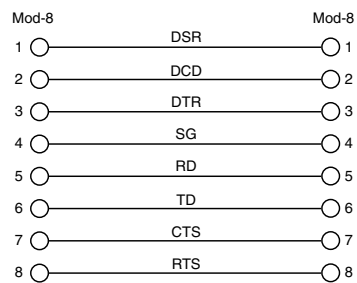
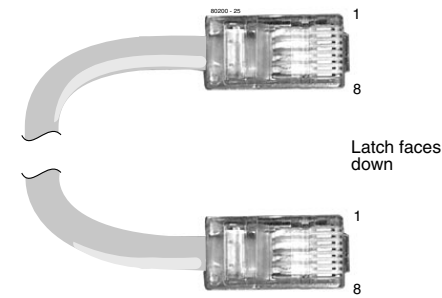


4. When you see the screen at right, click **Install>** to accept the displayed information.

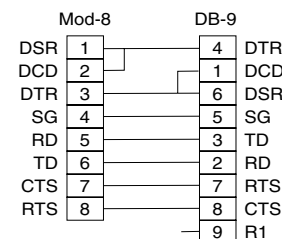
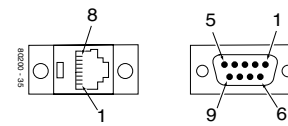


5. When you see the screen at left, click **Finish** to complete the installation.

Making Your Own Cables and Adaptors

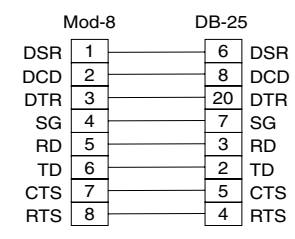
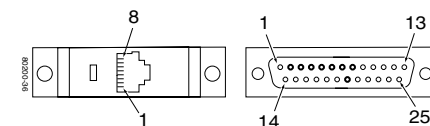


Mod 8 Patch Cord



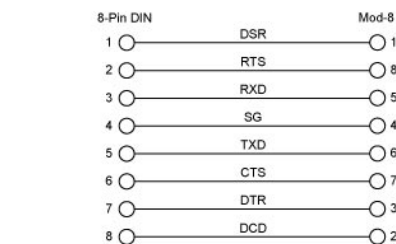
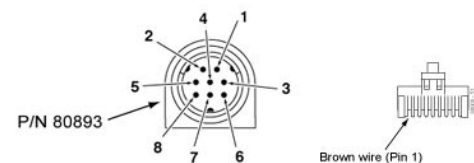
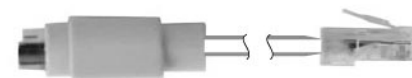
Mod-8 to 9-Pin Connector for PC/Laptop Connection

P/N 85980



Mod-8 to 25-Pin Connector for Modem Connection

P/N 85981



8-Pin DIN to Mod 8 Cable P/N 80893

NEC

NEC America, Inc., Corporate Networks Group
4 Forest Parkway, Shelton, CT 06484
TEL: 203-926-5400 FAX: 203-929-0535
cng.nec.com



80250AINS13

December 9, 2003
Printed in U.S.A.

Starting the Update Utility

1. Following the instructions on the next two pages, connect your PC to your system and verify the connection.
2. To start the Update Utility, click **Start + DS Series Update Utility**. You see the Update Utility Main Screen below.

System Status

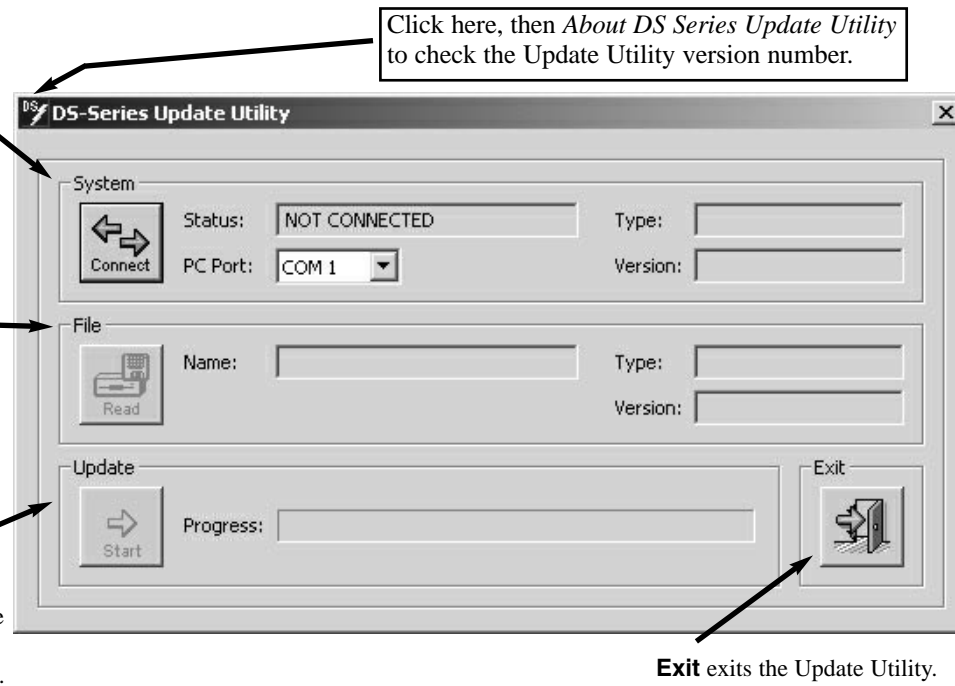
Status shows the connection status between the PC and the telephone system.
PC Port lets you specify which PC COM port is connected to the phone system.
Type shows the connected system's type.
Version shows the software version in the connected system.

File Status

Name displays the name of the phone system software file loaded when you press the **Read** button.
Type shows the system type for the software file to be loaded.
Version is the system software version for the software file to be loaded.

Update Status

Start loads the system software file into the phone system.
Progress displays the progress of the load.



Exit exits the Update Utility.

!! Important !!

- **Software version 03.**.** databases are not compatible with any prior 02.**.** versions.** You cannot restore a version 02.**.** database into an 03.**.** system.
- **In DS2000, the Update Utility automatically initializes (defaults) all site-specific data.** Before using the Update Utility in DS2000, use **9906 - Database Save** to back up your 03.**.** site data. After updating, use **9907 - Database Load** to restore the data.
- If you are programming more than one system, you must plug in the new system and press **Connect** to re-establish communication with your PC.

Using the Update Utility

1. Copy the system software file to the folder C:\NEC\DS-Series\Update Utility\D1000 or D2000 on your hard disk (depending on the type of telephone system you are updating).
 - If your CD is for version 03.03.00, for example, the file **ds1000rev030300.bin** for DS1000 03.03.00 software is in the folder **Update_UTILITY\80200-V03-03-00\DS1000**.
2. Make sure the system's **MODE** switch is in the up (**RUN**) position.
3. Click **Connect** to connect your PC to the phone system.
 - The **System Status** shows when you are connected and the software version and type for the connected phone system.
 - The Update Utility will provide error messages if you have made a mistake.
4. Click **Read** and select the system software file you want to load.
5. Click **Start** to load the software file you selected in step 4 above into your phone system.
 - The progress bar will display the load progress. **The load will take several minutes.**
 - Your phone system will be disabled while the software is loading. During the load:
 - On DS1000, the status LED will flash (slowly red then quickly green and red).
 - On DS2000, the CPU Running, Major Alarm, and Minor Alarm LEDs will flash in an alternating pattern.
 - When the load is complete, the phone system resets and the status/CPU Running LED flashes slowly (green).

If your system is not running (i.e., powered up but won't boot or the upload failed):

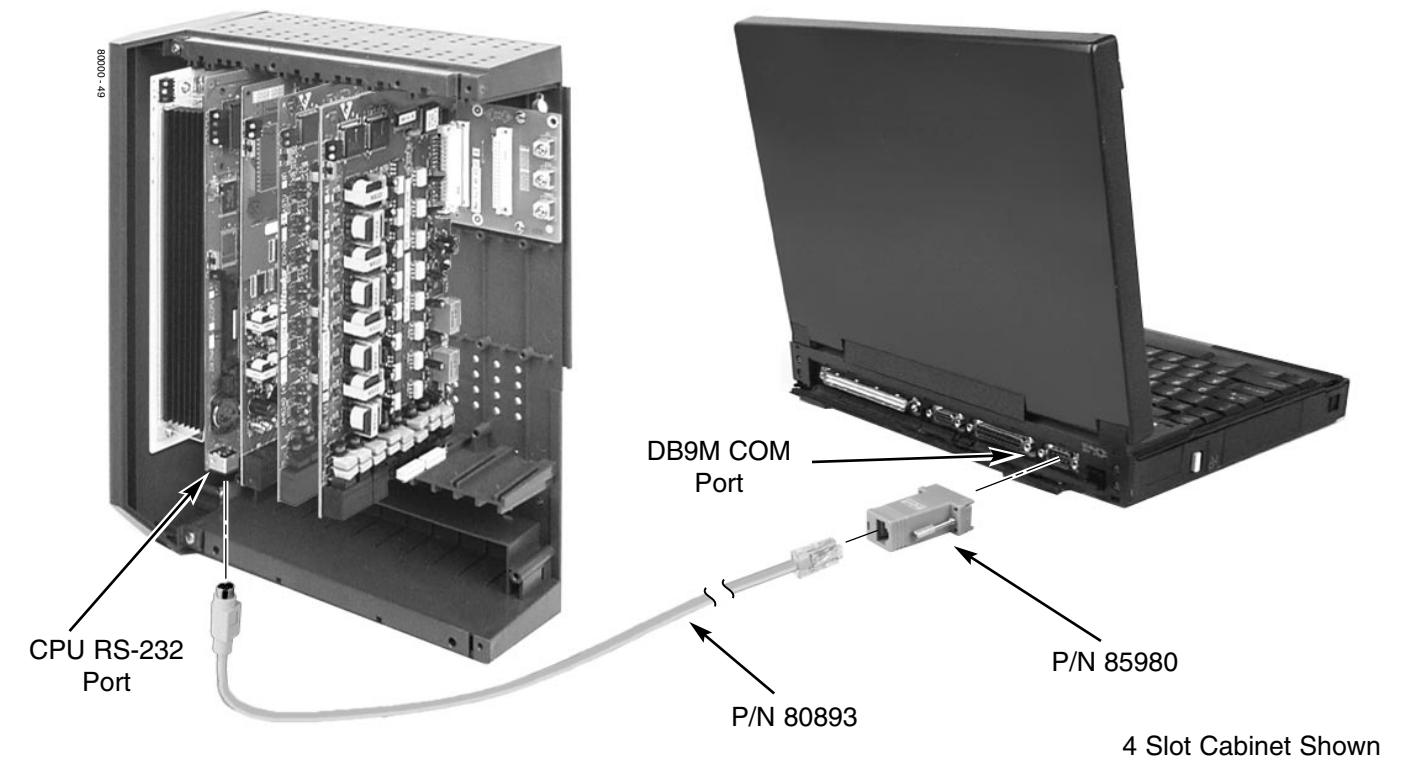
DS1000

- Set the **MODE** switch to the down (**LOAD**) position, press the red **RESET** button (located just below the **MODE** switch), then press the Update Utility **Connect** button. (The Update Utility displays: **CONNECTED - LOAD MODE**)
- Load the software normally. When the load completes, set the **MODE** switch back to **RUN** and press the red **RESET** button.

DS2000

- Press the red **RESET** button on the CPU. When the top two LEDs on the CPU start to flash (alternate red and green), press the Update Utility **Connect** button. (The Update Utility displays: **CONNECTED - LOAD MODE**)
- Load the software normally. When the load completes, press the red **RESET** button.

Connecting a PC to DS2000



4 Slot Cabinet Shown

Connecting a PC to DS1000

