

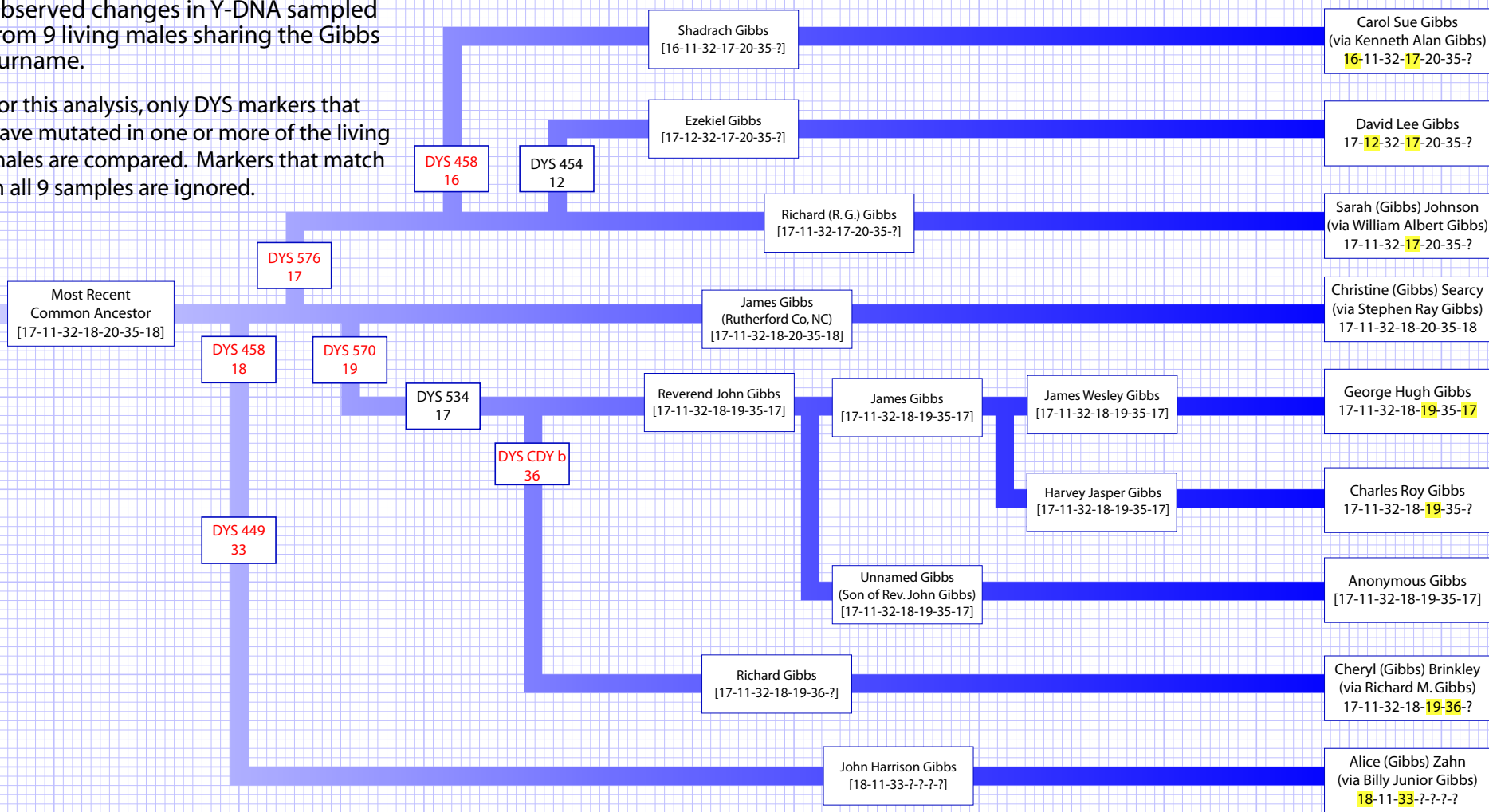
The CAROLINA GIBBS CLADE

Compiled by David Lee Gibbs 8/5/07

Haplogroup E3b1c1 (SNP M123+, M34+, M35+, M96+, P2+, M107-, M136-, M148-, M183-, M2-, M281-, M78-, M81-)

A table of descent from an unknown common ancestor as suggested by observed changes in Y-DNA sampled from 9 living males sharing the Gibbs surname.

For this analysis, only DYS markers that have mutated in one or more of the living males are compared. Markers that match in all 9 samples are ignored.



DYS values listed below the names of individuals are (left to right): DYS 458, DYS 454, DYS 449, DYS 576, DYS 570, DYS CDY b, and DYS 534. When these values are enclosed in square ellipses, e.g. [], the values have been assumed based on actual test results of living descendents. Red indicates "fast changing" alleles per FTDNA. Yellow highlights where the mutations are found in living Clade members. The timeline relative to these mutation events is not known, nor can we be certain when (or in what sequence) specific mutations occurred. We only know that they have occurred sometime in the last 300-400 years, and that certain mutations appear to have occurred more recently than others [i.e., the change in CDY b (from 35 to 36) appears to have happened after the change in 570 (from 20 to 19)]. The change in 458 (from 17 to 18) seen together with the change in 449 (from 32 to 33) seems to indicate that this line branched off from the modal haplotype before, rather than after, the others as the lines progress from the Most Recent Common Ancestor to the living clade members.